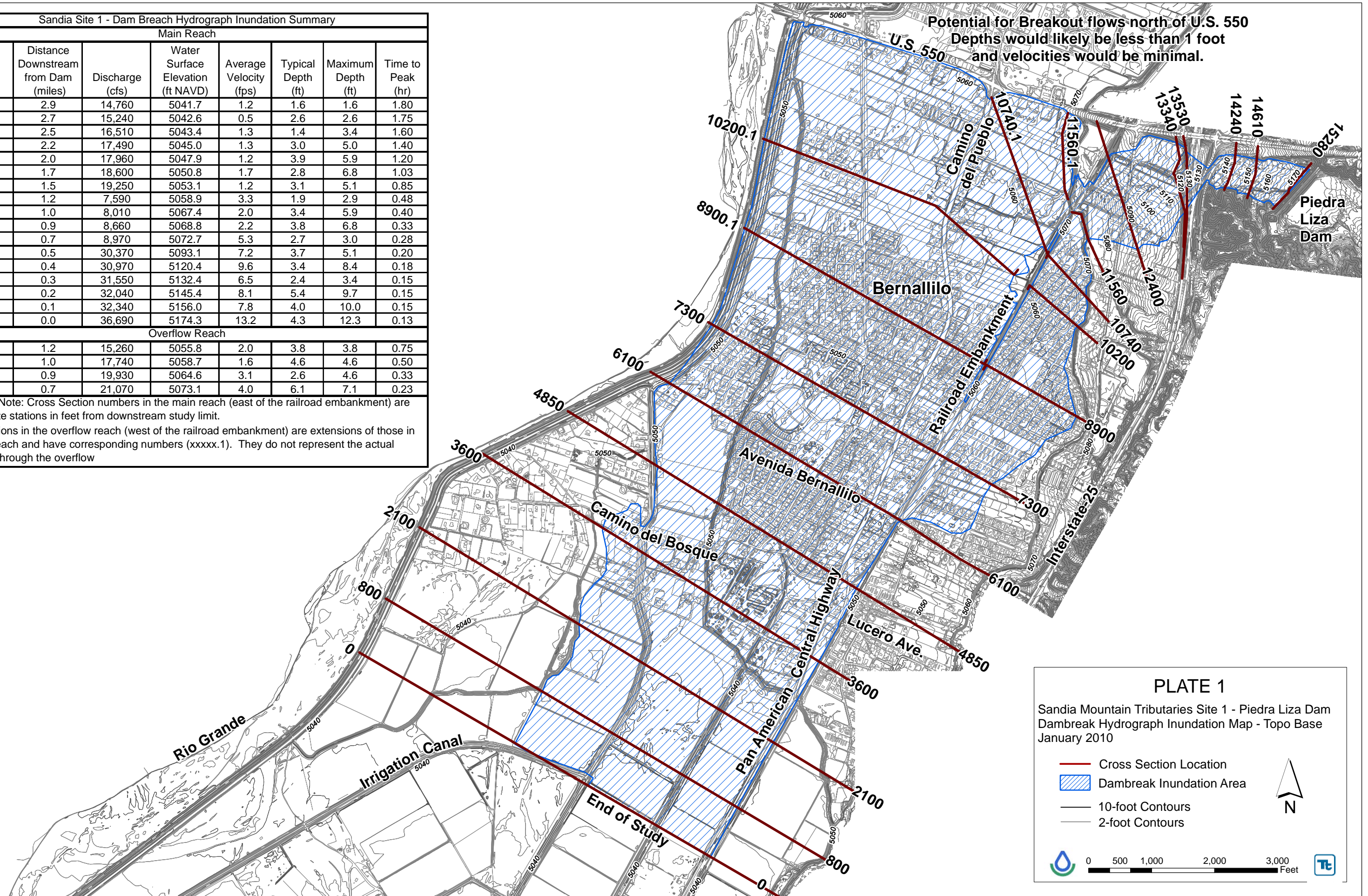


Sandia Site 1 - Dam Breach Hydrograph Inundation Summary							
Main Reach							
Cross Section Number	Distance Downstream from Dam (miles)	Discharge (cfs)	Water Surface Elevation (ft NAVD)	Average Velocity (fps)	Typical Depth (ft)	Maximum Depth (ft)	Time to Peak (hr)
0	2.9	14,760	5041.7	1.2	1.6	1.6	1.80
800	2.7	15,240	5042.6	0.5	2.6	2.6	1.75
2100	2.5	16,510	5043.4	1.3	1.4	3.4	1.60
3600	2.2	17,490	5045.0	1.3	3.0	5.0	1.40
4850	2.0	17,960	5047.9	1.2	3.9	5.9	1.20
6100	1.7	18,600	5050.8	1.7	2.8	6.8	1.03
7300	1.5	19,250	5053.1	1.2	3.1	5.1	0.85
8900	1.2	7,590	5058.9	3.3	1.9	2.9	0.48
10200	1.0	8,010	5067.4	2.0	3.4	5.9	0.40
10740	0.9	8,660	5068.8	2.2	3.8	6.8	0.33
11560	0.7	8,970	5072.7	5.3	2.7	3.0	0.28
12400	0.5	30,370	5093.1	7.2	3.7	5.1	0.20
13340	0.4	30,970	5120.4	9.6	3.4	8.4	0.18
13530	0.3	31,550	5132.4	6.5	2.4	3.4	0.15
14240	0.2	32,040	5145.4	8.1	5.4	9.7	0.15
14610	0.1	32,340	5156.0	7.8	4.0	10.0	0.15
15280	0.0	36,690	5174.3	13.2	4.3	12.3	0.13
Overflow Reach							
8900.1	1.2	15,260	5055.8	2.0	3.8	3.8	0.75
10200.1	1.0	17,740	5058.7	1.6	4.6	4.6	0.50
10740.1	0.9	19,930	5064.6	3.1	2.6	4.6	0.33
11560.1	0.7	21,070	5073.1	4.0	6.1	7.1	0.23

Stationing Note: Cross Section numbers in the main reach (east of the railroad embankment) are approximate stations in feet from downstream study limit.

Cross sections in the overflow reach (west of the railroad embankment) are extensions of those in the main reach and have corresponding numbers (xxxxx.1). They do not represent the actual stationing through the overflow



Sandia Site 1 - Dam Breach Hydrograph Inundation Summary							
Main Reach							
Cross Section Number	Distance Downstream from Dam (miles)	Discharge (cfs)	Water Surface Elevation (ft NAVD)	Average Velocity (fps)	Typical Depth (ft)	Maximum Depth (ft)	Time to Peak (hr)
0	2.9	14,760	5041.7	1.2	1.6	1.6	1.80
800	2.7	15,240	5042.6	0.5	2.6	2.6	1.75
2100	2.5	16,510	5043.4	1.3	1.4	3.4	1.60
3600	2.2	17,490	5045.0	1.3	3.0	5.0	1.40
4850	2.0	17,960	5047.9	1.2	3.9	5.9	1.20
6100	1.7	18,600	5050.8	1.7	2.8	6.8	1.03
7300	1.5	19,250	5053.1	1.2	3.1	5.1	0.85
8900	1.2	7,590	5058.9	3.3	1.9	2.9	0.48
10200	1.0	8,010	5067.4	2.0	3.4	5.9	0.40
10740	0.9	8,660	5068.8	2.2	3.8	6.8	0.33
11560	0.7	8,970	5072.7	5.3	2.7	3.0	0.28
12400	0.5	30,370	5093.1	7.2	3.7	5.1	0.20
13340	0.4	30,970	5120.4	9.6	3.4	8.4	0.18
13530	0.3	31,550	5132.4	6.5	2.4	3.4	0.15
14240	0.2	32,040	5145.4	8.1	5.4	9.7	0.15
14610	0.1	32,340	5156.0	7.8	4.0	10.0	0.15
15280	0.0	36,690	5174.3	13.2	4.3	12.3	0.13
Overflow Reach							
8900.1	1.2	15,260	5055.8	2.0	3.8	3.8	0.75
10200.1	1.0	17,740	5058.7	1.6	4.6	4.6	0.50
10740.1	0.9	19,930	5064.6	3.1	2.6	4.6	0.33
11560.1	0.7	21,070	5073.1	4.0	6.1	7.1	0.23

Stationing Note: Cross Section numbers in the main reach (east of the railroad embankment) are approximate stations in feet from downstream study limit.
 Cross sections in the overflow reach (west of the railroad embankment) are extensions of those in the main reach and have corresponding numbers (xxxxx.1). They do not represent the actual stationing through the overflow

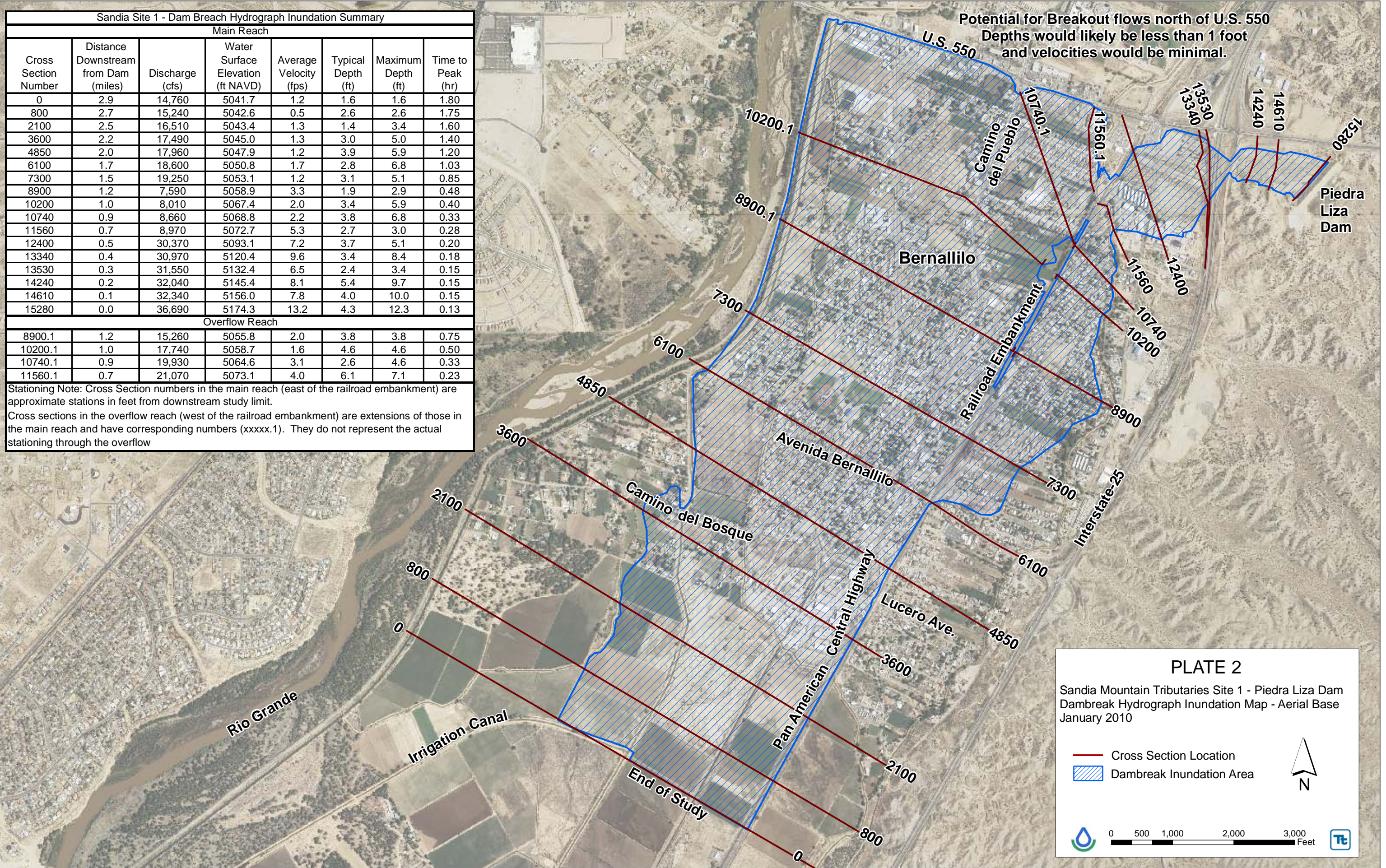


PLATE 2

Sandia Mountain Tributaries Site 1 - Piedra Liza Dam
 Dambreak Hydrograph Inundation Map - Aerial Base
 January 2010

— Cross Section Location
 Dambreak Inundation Area

N

0 500 1,000 2,000 3,000 Feet